

elZinc Graphite®

elZinc Graphite® is rolled architectural titanium zinc pre-patinated to a dark grey colour which is very similar to natural slate. This finish is produced after the surface has undergone a nonpolluting phosphating process.

elZinc Graphite® is manufactured according to the requirements established by EN1179 and EN988 standards. During the manufacturing process, small amounts of titanium and copper are alloyed to electrolytic zinc of greater than 99,995% purity to achieve outstanding material properties that exceed the requirements established by EN988.

Main applications:

- Roofing and façade cladding
- Rainwater systems
- Interior decoration

Specific recommendations for the handling of elZinc Graphite®:

- Remove the **protective film** applied to each roll or sheet once the material is in place.
- In order to adequately solder the material **the surface must be mechanically or chemically stripped** until the natural base zinc is visible.
- A high proportion of forming can be executed once the material temperature has reached 7°C (folding and profiling).
- In locations with high salinity, we recommend the use of **elZinc Graphite Advance***.
- Due to its colour characteristics, **elZinc Graphite®** is more sensitive to building site dust and dirt. For this reason we recommend taking extra care during the handling and protection of this material during the installation phase.

For further comprehensive information on the correct application of the **elZinc®** range, please contact our technical Department.

Standard measurements:

- Widths: 500, 600, 650, 670 and 1000 mm
- Thicknesses: 0,65 - 0,70 - 0,80mm

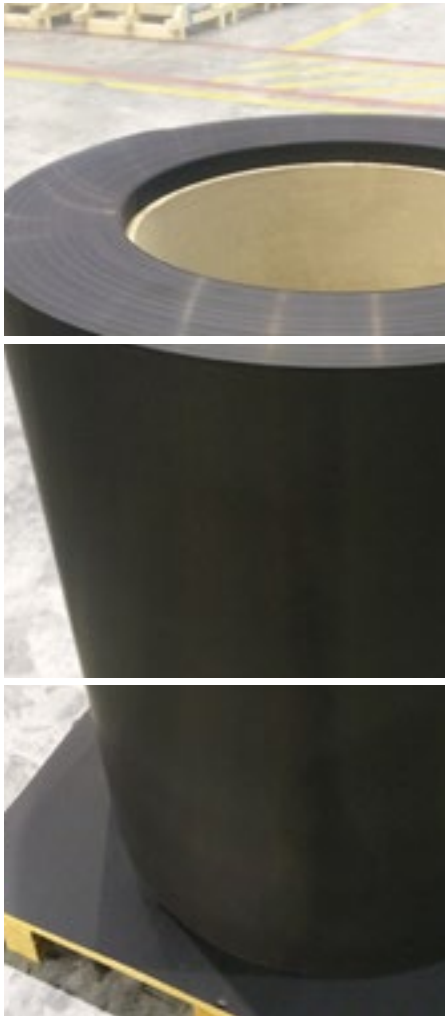
Formats:

- Sheets 1000x2000 mm and 1000x3000 mm : in pallets of 1000kg
- 1000kg coils (internal diameter: 508 mm)
- Fixed length 100kg coils (pallets of 6 rolls) (internal diameter: 300 mm)

Other dimensions and thicknesses are available upon request.

* elZinc Advance is a transparent 35 micron organic layer which protects el zinc finish against corrosion in the most extreme environments.

This document describes exclusively the elZinc Graphite® characteristics; it is the responsibility of installers and building site managers only to check the use of other products and techniques used on site and to make sure that these products and techniques are compatible and appropriate to use with this material.



ZINC IBERICO

T 03 9314 2426
E info@elzinc.com.au
W www.elzinc.com.au
94 Endeavour Way
Sunshine West VIC 3020