

elZinc Slate®

elZinc Slate® is a matt light grey rolled zinc with a very similar appearance to naturally weathered zinc.

The pre-weathering process uses a non-polluting phosphate treatment which gives it a uniform appearance that would have only developed naturally after a considerable period of exposure to the weather. **elZinc Slate®** is especially recommended for façades and soffits, where bright rolled zinc takes longer to naturally develop its patina.

elZinc Slate® clearly has applications in restoration and renovation work since its pre-weathering allows it to blend in very well with the existing zinc.

elZinc Slate® is produced according to the European Standards EN1179 and EN988, with a chemical composition similar to that of elZinc® Natural. Electrolytic zinc with a purity in excess of 99.995% zinc is used, to which small and tightly controlled quantities of copper and titanium are added to produce an alloy whose properties better the requirements stipulated in EN 988. These properties are unaffected by the pre-weathering treatment.

Main applications:

- Roofing
- Façades
- Soffits
- Interior decoration
- Rainwater systems

Specific recommendations for elZinc Slate®:

- Remove the protective film applied to each roll or sheet soon after installation.
- Most of the processes required for roofing and cladding can be carried out once the temperature of the zinc reaches 7°C (profiling and seaming) – please consult our technical manuals for more detail).
- In order to adequately solder the material the surface must be mechanically stripped until the natural base zinc is visible.

For more information about the correct application of the **elZinc Slate®** product, consult our technical manuals.

Standard supply dimensions:

Widths: 500 - 600 - 650 - 670 - 1000 mm

Thicknesses: 0.65 – 0.70 – 0.80 – 1.0 mm

Delivery formats:

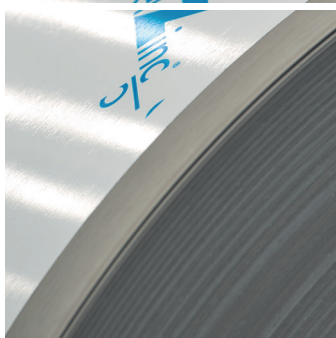
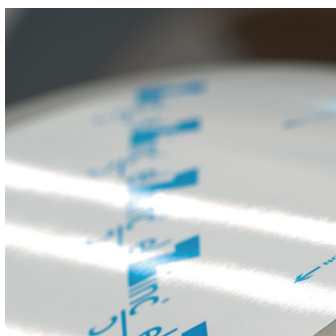
1000 kg coils

Fixed length small coils (ca. 100kgs on pallets of six rolls)

Sheets (2000 x 1000 mm) in pallets of 1000 kg

Other formats are available on request.

This document only describes the characteristics of elZinc Slate®, and it is the responsibility of construction professionals to check that other materials and techniques used on the project are compatible with this material.



ZINC IBERICO

T 03 9314 2426

E info@elzinc.com.au

W www.elzinc.com.au

94 Endeavour Way

Sunshine West VIC 3020



elZinc Rainbow®

a new world of colors

elZinc® has developed a new pre-weathered range of colours under the brand elZinc Rainbow®.

elZinc Rainbow® is a rolled zinc-titanium, which meets the European standard EN988, manufactured from elZinc Slate® (with the exception of elZinc Rainbow gold) by applying mineral pigments. The 35µm organic coating provides additional anti-corrosion protection.

Its attractive, natural and warm tones give it great aesthetic value for both interior and exterior applications. Each shade in the range lends its own personality to a project, fitting in perfectly with its surroundings.

Main applications:

- Roofing
- Façades
- Interior decoration

Specific recommendations for the elZinc Rainbow® range:

- The temperature of the product must reach 10°C before it is folded or shaped.
- Use rolls or sheets from the same order for each project (because it is made using organic materials, elZinc Rainbow® can have slight variations in shade).
- Remove the protective film applied to each roll or sheet once the material is in place.
- Fold the material with an internal radius of 3x the thickness of the zinc.
- In order to adequately solder the material the surface must be mechanically stripped until the natural base zinc is visible.

For more information about the correct application of the range of elZinc® products, consult our technical manuals.

The elZinc Rainbow® range:

Four different finishes: **Red, Blue, Green, Black, Gold & Brown.**

Standard measurements:

Widths: 500, 600, 650, 670 and 1000 mm

Thickness: 0,7 mm

Formats:

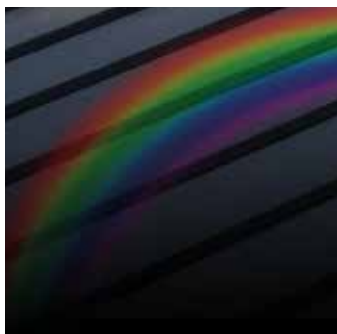
1000Kg coils

Fixed length 100kg coils (pallets of six rolls)

Sheets (2000x1000x0.7mm) in pallets of 200, 500 and 1000kg

The colour of elZinc Rainbow® has a half life of 30 years, its durability depends on the conditions where the product is installed.

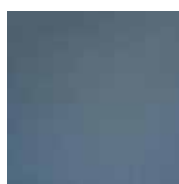
elZinc® does not guarantee the lifespan of the colour.



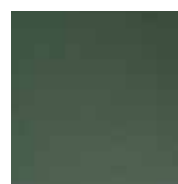
elZinc Rainbow®



elZinc Rainbow® red



elZinc Rainbow® blue



elZinc Rainbow® green



elZinc Rainbow® black



elZinc Rainbow® gold



elZinc Rainbow® brown

ZINC IBERICO

T 03 9314 2426

E info@elzinc.com.au

W www.elzinc.com.au

94 Endeavour Way

Sunshine West VIC 3020